

**HANDBALL DAYS**  
**LÜBECK 2026**  
**25. – 28. Juni**



**Information for  
participants of the  
Handball Days Lübeck  
2026**



## QUICK START – Key points at a glance

Welcome to the Lübeck Handball Days!

Here you'll find all the key information you need for your stay – concise and easy to follow.

### Registration & Accommodation

- Registration takes place at the Lohmühle
- Accommodation in schools and sports halls
- Classrooms are usually available from 4.00 pm (Friday)
- Accommodation must be vacated by 6.00 pm on Sunday at the latest

### Key dates

- **Thursday:** Primary School Cup, club presentations
- **Friday:** Arrival, parade
- **Saturday:** Matches, cup competitions, disco & coaches' lounge
- **Sunday:** Finals & prize-giving ceremonies, departure

### Local transport

- With your tournament pass, you can travel by bus within the city limits for free
- Please use public transport – parking spaces are limited

### Venues

- **Lohmühle (main tournament area & events zone)**
- **Buniamshof**
- **Falkenwiese**
- **Hansehalle (including the Mini-Cup)**

### Catering

- Friday evening and Saturday lunchtime at the venue,
- Sunday lunchtime at the Lohmühle,
- Breakfast at the accommodation and at the Lohmühle,
- Please ensure you keep to the times

### Game schedule & results

Use the ProCup app

- Fixtures
- Live scores
- Tournament information

Fixtures are published online around two weeks in advance

### Informations

- Please use the site maps for your guidance
- Please also check the latest notices
- Important announcements will be made over the PA system on site
- Check the ProCup app regularly

### Tournament pass

Mit eurem Ausweis bekommt ihr:

- ÖPNV-Nutzung
- Freibad, Kanu-Tour
- Zugang zur Disco
- Verpflegung (je nach Paket)

### Tip

- Save the key venues and times straight to your mobile
- Use the ProCup app for your fixture list

### Contact & Help

If you have any questions:

- Information point at every venue
- First-aid staff at every venue
- anmeldung@handballdays.com



## **A warm welcome to the Handball Days 2026 in our wonderful Hanseatic city of Lübeck!**

We are delighted that you are here and taking part in this exciting handball tournament. Your presence and sporting spirit will help make the Handball Days in Lübeck an unforgettable event.

As participants staying in our city, you will not only have the opportunity to showcase your handball skills, but also to experience the beauty and hospitality of our city. Lübeck, with its rich history and picturesque setting, warmly welcomes you.

Enjoy the varied programme of events at the Handball Days, such as the chance to go on a canoe trip or swim at the Krähenteich and Falkenwiese outdoor pool, visit the disco or the Coaches Lounge, or take part in the big raffle with over 8,000 fantastic prizes.

We hope that you will not only achieve sporting excellence, but also forge new friendships and create unforgettable memories. The Handball Days Lübeck 2026 are not just a competition, but also an opportunity to connect with like-minded people and embrace the excitement of handball.

Your enthusiasm for handball enriches our city, and we are proud to welcome you as our guests. Please do not hesitate to contact us if you have any questions or concerns – we are happy to assist you.

We've put together all the key information about this major event for you. We hope you have a fantastic time at the Handball Days Lübeck 2026 and that you make the most of the opportunity to enjoy Lübeck to the full!

Here's to a successful and exciting event!

With sporting regards, The Organising Committee of Handball Days Lübeck 2026



You can find the latest news about the tournament at [www.handballdays.com](http://www.handballdays.com)

**or follow us on Facebook and Instagram.**





## Hansestadt Lübeck

Founded in 1143 by Adolf von Schauenburg, Lübeck was the centre of the medieval Hanseatic League for around 500 years. During this period, the Hanseatic city of Lübeck was the second-largest city in Germany after Cologne and dominated trade in the North Sea and the Baltic Sea.



In Lübeck, everything is close at hand. The historic old town, with its narrow alleyways, Gothic churches, numerous museums and around 1,800 listed buildings, has been a UNESCO World Heritage Site since 1987. Lübeck is surrounded by water. The Trave, Wakenitz and the canal offer a wonderful opportunity to explore the water-surrounded old town from a very special perspective. In addition to the wide range of shopping opportunities in the city centre, a stroll along the Baltic Sea in Travemünde is also well worth a visit.

## Hansestadt LÜBECK



## MTV Lübeck - Handball



Männer-Turn-Verein Lübeck von 1865 e.V. is the host club for the Handball Days Lübeck. With teams in both the men's and women's divisions, as well as the senior section, ranging from the ball games group right up to the Under-19s – all of which have two squads – MTV Lübeck is one of the largest handball clubs in the state, with over 30 teams.

The club is also on the up in sporting terms. The boys' A and B youth teams and the girls' B youth team play in the Youth Bundesliga, whilst the men's first team is performing successfully in the Regionalliga. A tournament as large as the Handball Days is only possible and feasible thanks to the many volunteers, most of whom are parents and relatives. After the tournament is before the tournament, and so, after a short summer break, the organising team gets straight back to work on the next tournament. We would like to take this opportunity to say a huge thank you to the organising team and the numerous helpers during the tournament.

Every Thursday during the Handball Days Lübeck, MTV Lübeck presents all its teams at the Hansehalle. A visit to the hall is always well worth it.



## Travel and registration

On the day of arrival, please check in with us in good time. Unless you have received further instructions from us, please come to the Lohmühle to register. There you will receive all your information, documents, tournament shirts, disco wristbands and the key to your accommodation. If you have not yet paid for everything in advance, you can pay here in cash or by card.

Accommodation is usually provided in schools or sports halls within the Lübeck city area. You will receive a brief orientation of the accommodation from the on-site contact person. The times for the orientation and handover must be agreed with the contact person. As regular school lessons are still taking place on Friday, classrooms are usually only available from 4 pm. Please take this into account when making your plans.

Check-out on Sunday is by 6 pm at the latest. Teams staying overnight until Monday are exempt from this. Please coordinate the time with the contact persons.

An overview with details of the accommodation, meals and rules of conduct will be sent to you by email and is also displayed at the accommodation and available on the website [www.handballdays.com](http://www.handballdays.com).

### The registration desk at the Lohmühle will be staffed as follows:

Thursday:	02.30 pm – 7.00 pm
Friday:	11.00 am – 9.00 pm
Saturday:	10.00 am – 6.00 pm
Sunday:	10.00 am – 2.00 pm

**If you have any questions, please feel free to get in touch**



[anmeldung@handballdays.com](mailto:anmeldung@handballdays.com)

## Tournament schedule

### THURSDAY , 25.06.2026

	ZEIT	ORT
Primary school tournament	from 08:30 am	Lohmühle
Canou-Round-Tour	10:00 - 02:00 am	Wallstrasse 35a
Outdoor pool Krähenteich, Falkenwiese	10:00 - 07:00 am	An der Mauer 51, Wakenitzufer 1b
Award ceremony primary school tournament	from 02:30 pm	Hansehalle
Handing out crew T-shirts, tournament ID for	02:30 - 04:30 pm	Hansehalle
MTV introduces itself	04:30 - 07:00 pm	Hansehalle
Dinner	06:00 - 08:00 pm	Hansehalle

### FRYDAY , 26.06.2026

	ZEIT	ORT
Canou-Round-Tour	10:00 - 09:00 am	Wallstrasse 35a
Outdoor pool Krähenteich, Falkenwiese	10:00 - 07:00 am	An der Mauer 51, Wakenitzufer 1b
Handing out crew T-shirts, tournament ID for	from 02:00 pm	Hansehalle
Opening event, Parade	04:00 - 05:30 pm	Holstentor
Dinner	05:00 - 10:00 pm	Lohmühle, Zelt Chicken fricassee with rice Vegetable fricassee with rice
Game start Handball-Days	06:30 am	Lohmühle
Dinner	06:00 - 09:30 pm	Buniamshof Chicken fricassee with rice Vegetable fricassee with rice

### SATURDAY , 27.06.2026

	ZEIT	ORT
Breakfast Lohmühle	06:30 - 10:00 am	Lohmühle, Zelt
Game start Handball-Days	08:00 am	Lohmühle, Buniamshof, Falkenwiese
Canou-Round-Tour	10:00 - 06:00 am	Wallstrasse 35a
Outdoor pool Krähenteich, Falkenwiese	10:00 - 07:00 am	An der Mauer 51, Wakenitzufer 1b
Mini Cup	10:00 - 02:00 am	Hansehalle
Inclusion Cup	09:00 - 03:00 am	Lohmühle
Free face painting for children	12:00 - 05:00 pm	Lohmühle
Lunch (only Gold package)	11:30 - 02:00 am	At the venue Chicken stir-fry Vegetarian stir-fry
Dinner	05:00 - 07:30 pm	Lohmühle, Zelt Spaghetti Bolognese Vegetarian Bolognese
Disco, Coaches-Lounge	08:00 - 11:00 pm	Lohmühle, Zelt, Hansehalle

### SUNDAY , 28.06.2026

	ZEIT	ORT
Breakfast Lohmühle	06:30 - 10:00 am	Lohmühle, Zelt
Game start Handball-Days	08:00 am	Lohmühle, Buniamshof
Free face painting for children	09:00 - 02:00 am	Lohmühle
Canou-Round-Tour	10:00 - 06:00 am	Wallstrasse 35a
Outdoor pool Krähenteich, Falkenwiese	10:00 - 07:00 am	An der Mauer 51, Wakenitzufer 1b
Lunch (only Gold package)	11:00 - 02:00 am	Lohmühle, Zelt Tortellini in a tomato and herb sauce
Award ceremonies *	rd. 02:00 pm	Lohmühle

Handball	Rahmen-
Days	programm

\*The award ceremonies will be held directly on the field after each final match.



Here is an overview of the key rules governing the tournament. These are described in more detail in the tournament regulations.

## Running time

2 x 11 minutes

Time-outs

No team time-outs

No half-time break, but a change of ends

Hinausstellung  
=  
2 Min.

## IHF Rules

No need for a defensive formation  
Player substitutions even when not in possession

## Both teams

legen einen Ersatzball neben das Tor

## Live stream – Score (tablet)

The first team handles the live stream  
Before the match starts: Select the match  
After the match ends: Check the score and click 'End Broadcast'

## The first team

has the throw-in  
Takes the kick-off  
Starts on the side with the red pitch number by the goal

## Disqualification with a report

Suspension for at least one match  
The referee must report the incident to the tournament organisers immediately after the match

## The latter team

Must change if wearing the same kit, or put on a bib

## 7-metre throw

In the event of a draw in the final rounds, the match should be played on a different pitch

5+5 throwers

## Equipment - Adhesives

Studded boots are prohibited  
Grip aids are prohibited in the F, E and D youth categories

## Tournament Rules





## Venue – Lohmühle

For one weekend, handball takes centre stage at the Lohmühle instead of football. There are a total of 17 pitches here, both grass and artificial turf. You can grab a bite to eat at the numerous food stalls, and the Fun Area offers entertainment for young and old alike. In the main marquee, alongside the food counter, you'll also find the raffle prize collection point and the sports equipment stall. If the weather's good, the disco will take place outside behind the marquee. Otherwise, we'll be partying inside the marquee.



Field 17 is surrounded by a stand where fans can create a great atmosphere. If a 7-metre throw is required, please leave the playing field and move to the designated area next to the first-aiders. The Johanniter first-aiders are on hand and will help in any way they can. Also at the Lohmühle is the Hansehalle, where matches are also held. Here you will also find accessible toilets and a food and drink stall. If you have any questions or problems, please come to the information desk at the Lohmühle. This is also where the tournament management and the referees' headquarters are located. The prize-giving ceremony will take place on Sunday, also at the Lohmühle, directly on the pitch after the final match.

Field 17 is surrounded by a stand where fans can create a great atmosphere. If a 7-metre throw is required, please leave the playing field and move to the designated area next to the first-aiders. The Johanniter first-aiders are on hand and will help in any way they can. Also at the Lohmühle is the Hansehalle, where matches are also held. Here you will also find accessible toilets and a food and drink stall. If you have any questions or problems, please come to the information desk at the Lohmühle. This is also where the tournament management and the referees' headquarters are located. The prize-giving ceremony will take place on Sunday, also at the Lohmühle, directly on the pitch after the final match.





## Venue - Buniamshof

In addition to athletics and American football, the Buniamshof Stadium hosts the Lübeck Handball Days one weekend a year. There are a total of 12 pitches here, on grass and rubber surfaces. Various food stalls are on hand to cater for your needs. Paramedics from the Johanniter organisation are also on site to assist with any injuries.



The lovely beach volleyball court is a great place to have some fun between matches. There is also the option of taking a canoe trip in the immediate vicinity using your tournament pass. The large grandstand is available for fans and the team. The matches on Friday evening are played under floodlights, which is another highlight of the venue.

Parking is available directly on Possehlstraße. However, where possible, please use public transport. Take line 3 from 'Holstentorplatz' directly to the 'An der Hansehalle' stop.

If you have any questions or issues, please contact the tournament organisers on site.





## Venue – Falkenwiese

Even in the early years, Falkenwiese was the heart of the Handball Days. A few years ago, the Falkenwiese sports centre was completely refurbished and has since become a popular hub for Lübeck's recreational athletes. To mark the anniversary year of the Handball Days, matches are once again being held on 12 pitches at Falkenwiese. Of course, we'll also have food and drink stalls available at this venue.



Parking is available in the Falkenstraße car park. However, please use public transport where possible. To get to the “Buniamshof” venue, travel to the “Holstentorplatz” stop and then walk for a few minutes. To get to the Lohmühle venue, travel to the ‘An der Hansehalle’ stop. You can find the correct bus route on the Stadtwerke Lübeck Mobil website. With your tournament pass, you can use public transport free of charge to travel comfortably between the venues and your accommodation.





## Tournament pass

Every participant in the 2026 Lübeck Handball Days will receive a tournament pass upon registration. This pass serves as your ticket to all the activities taking place during the Handball Days.

- Free use of buses within Lübeck city limits (public transport)
- Free use of the Krähenteich natural swimming pool
- Free use of the Falkenwiese natural swimming pool
- Free use of canoes
- Free entry to the disco on Saturday evening
- Free entry to the Trainer Lounge on Saturday evening

Depending on the package you have booked, you will receive your meals on presentation of the card. These will then be ticked off on the back of the card.



Name:	_____							
Frühstück	<input type="checkbox"/>	<input type="checkbox"/>	<input type="checkbox"/>	<input type="checkbox"/>	<input type="checkbox"/>	<input type="checkbox"/>		
Mittagessen	<input type="checkbox"/>	<input type="checkbox"/>	<input type="checkbox"/>	<input type="checkbox"/>	<input type="checkbox"/>	<input type="checkbox"/>		
Abendessen	<input type="checkbox"/>	<input type="checkbox"/>	<input type="checkbox"/>	<input type="checkbox"/>	<input type="checkbox"/>	<input type="checkbox"/>		
	Mi.	Do.	Fr.	Sa.	So.	Mo.		
Verein:	_____					<input type="checkbox"/>	<input type="checkbox"/>	<input type="checkbox"/>
						Altersklasse		



## Information about accommodation

Welcome to the Handball Days in Lübeck,

You have booked one of our packages (Silver or Gold) including accommodation. The Hanseatic City of Lübeck has kindly made a number of schools and sports halls available to us to accommodate visiting teams. We will only be able to let you know which school or sports hall you will be staying in at very short notice. However, you will find an overview of all possible accommodation options in the attachment, along with additional information on meal times and the meals themselves.

**We have recently learnt that some of the accommodation facilities have motion detectors installed in the classrooms which cannot be switched off. This means that the ceiling light comes on whenever there is movement. We therefore recommend that you bring a sleep mask with you.**

In addition to your accommodation, you will receive your booked meals either directly in the canteen of the respective school or in the canteen of a neighbouring school. Please adhere to the meal times specified in your canteen. We will certainly try to take into account any travel times between your accommodation and the match venues, so that you can play the matches well-rested and fuelled.

To ensure everyone has a wonderful and unforgettable stay, we ask you to observe the following few simple rules.

- ❁ There is a strict ban on alcohol and smoking in the school, on the entire school grounds, and in the sports hall (any breach will result in exclusion from the tournament!)
- ❁ The accommodation must be left in the same condition as it was found. The clubs are liable for any damage.
- ❁ Classrooms, sports halls, washrooms and toilets must be left in a clean and tidy condition for the organiser at the end of the tournament. The club is liable for any defects or damage.
- ❁ Booked meals are to be taken in the relevant canteen at the accommodation or in the canteen of a neighbouring school. The instructions of the staff must be followed.
- ❁ Clubs will be issued with a key for their accommodation rooms; the respective club is liable for any loss!
- ❁ Each club/team is responsible for locking the main entrance door of their accommodation. The classrooms cannot be locked separately. The organiser is not liable for any lost and/or damaged items belonging to players, supervisors and coaches.
- ❁ From 10.00 pm, we ask you to keep the noise down. If you are staying in schools located right in the city centre, you should also avoid making a 'loud' noise from 10.00 pm onwards.

## Information about meal distribution

To ensure that meal arrangements run smoothly, we ask that everyone stick to the designated meal distribution points. At the Lohmühle, meals will be served in the large marquee. Teams playing at the Buniamshof and the Falkenwiese on Friday will also have their evening meal there. On Saturday, lunch can be taken at the match venue. On Sunday, meals will only be available at the Lohmühle.



Breakfast on Saturday and Sunday, as well as dinner on Saturday, will be served at your accommodation. When you register, you will receive a schedule showing where each meal will be served. We strongly urge you to eat your meals at the designated location, as otherwise this may result in other teams not receiving any food.

Day	Meal	Lohmühle	Buniamshof, Falkenwiese
<b>Friday</b>	Diner	05:00 – 10:00 pm	06:00 – 09:30 pm
		Chicken fricassee with rice Vegetable fricassee with rice	Chicken fricassee with rice Vegetable fricassee with rice
<b>Saturday</b>	Breakfast	06:30 – 10:00 am	
	Lunch (Gold packages only)	11:00 – 02:00 pm	11:00 – 02:00 pm
	Diner	04:30 – 07:30 pm	
<b>Sunday</b>	Breakfast	06:30 – 10:00 am	
	Lunch (Gold packages only)	11:00 – 02:00 pm	
		Tortellini in a tomato and herb sauce	

We always do our best to accommodate everyone and make things as straightforward as possible. Unfortunately, given the number of participants, this isn't always possible. We therefore ask for your understanding if things don't go quite to plan. If you have any questions, please feel free to contact the Handball Days Lübeck registration team. Please include your question and a mobile number so we can call you back in your message..



[anmeldung@handballdays.com](mailto:anmeldung@handballdays.com)



## Transfer - Public transport

The Handball Days take place across the whole of Lübeck. Matches will be played at the Lohmühle, the Buniamshof and the Falkenwiese. Accommodation is available in various schools across the city, and as always, parking spaces are in short supply.

You can therefore use Stadtwerke Lübeck Mobil's local public transport services free of charge within the 6000 zone using your tournament pass.

It's best to find out in advance which bus routes are most important to you.



Scan me





## Parade

We want to kick off the 30th edition of the Lübeck Handball Days together with you. Without you, this event wouldn't be such a huge success every year! We'd like to get the Handball Days off to a flying start with all participants by holding a colourful and lively parade through Lübeck.

**Now we need your help – show us your diversity!**

**Show off your shirts – Show off your flags – Show off your colours!!!**

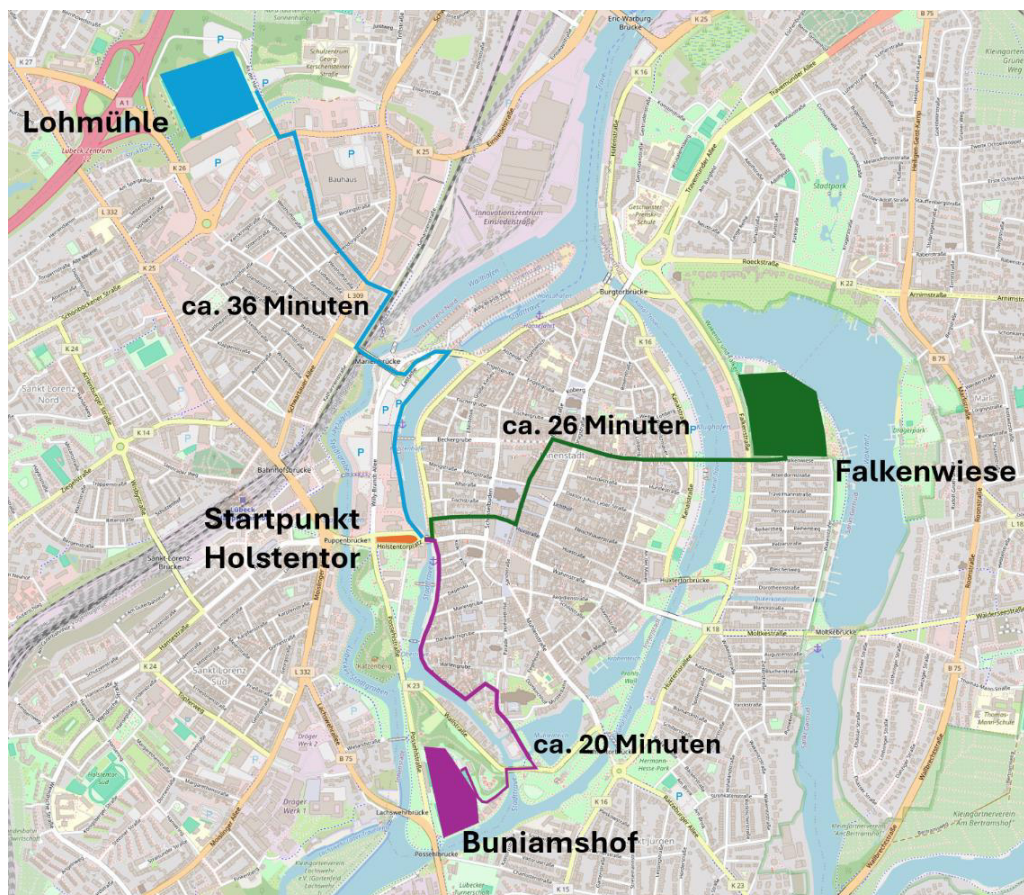
Starting from the Holstentor, we're going to do a 'star march' to all the tournament venues. Each team will head to the venue where they're playing their first match on Friday. Anyone who doesn't have a match on Friday is, of course, free to join in and go wherever they like.



**Friday, 26. June 2026 – from 04:30 pm**



**At Holstentorplatz, in front of the Holstentor**





## A tournament within a tournament

### The special tournaments at Handball Days Lübeck

As well as the main tournament, Handball Days Lübeck features several special competitions – our ‘tournament within a tournament’.

Here, different age groups and teams get their own chance to play, have fun and create unforgettable memories.

### PRIMARY SCHOOL CUP

#### The traditional opening

Primary school classes from the region compete against each other and gain their first taste of tournament action – without any pressure to perform.

#### That makes this cup special is:

- Free to enter
- Mixed teams
- Focus on fun & team spirit



#### Highlight:

Any additional penalty throws taken after the end of the match are included in the final score.



**Thursday**  
08:00 – 02:00 pm



**Lohmühle**

### Mini CUP

#### Big fun for the little ones

This is where the youngest handball players gain their first experience with the ball and the game – in a safe and fun environment.

#### Here's what you can expect:

- Child-friendly play area
- Activity and play stations
- Climbing and gymnastics facilities

#### Focus:

Exercise, fun and trying new things



**Saturday**  
10:00 – 02:00 am



**Hansehalle**

### Inclusions CUP

#### Enjoy handball together

In the Inclusion Cup, teams comprising both able-bodied and disabled players compete together. The sporting competition takes a back seat – the focus is on teamwork.

#### In the spotlight:

- Fairness & respect
- Team spirit
- Inclusion in sport

#### Registration:

[anmeldung@handballdays.com](mailto:anmeldung@handballdays.com)



**Saturday**  
10:00 – 02:00 am



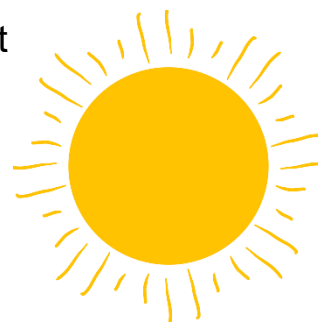
**Lohmühle**



## Weather/Heat Advisory

Even though we enjoy the sunshine, it's important to protect yourself. High temperatures and strong sunlight can take their toll on the body. Make sure you:

- drink plenty of fluids,
- take regular breaks in the shade
- and wear a hat and use sunscreen

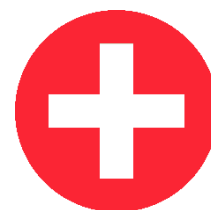


**Protective measures are recommended when the UV index reaches 3 or above.**

You can find the current UV index and important weather warnings at any time at [wetter.de](http://wetter.de)

Scan me

If you have any questions or experience symptoms such as circulatory problems, dizziness, nausea or headaches, please contact the first aiders on site immediately.



## Lost and Found

At such a big event, things are bound to go missing. Be it the ball, your shoes, or even your wallet.

If you find anything or have lost something, please contact the tournament organisers at the relevant venue: Lohmühle, Buniamshof or Falkenwiese.



Everything is collected and can be collected from there. Lost property will still be available after the tournament. Please contact us via [www.handballdays.com](http://www.handballdays.com) or by email at:



[fundsachen@handballdays.com](mailto:fundsachen@handballdays.com)



## Players Night

Our Handball Days Party will take place at the Lohmühle on Saturday. Entry is open to all tournament participants with a tournament pass and party wristband.

The party wristbands will be handed out at the entrance.

There are two colours of disco wristbands. These regulate the serving of alcoholic drinks (beer/sparkling wine).



**RED** party wristbands –  
Participants **under 16 years old or without an ID,**

▶ **Alcohol PROHIBITED!**

**GREEN** party wristbands –  
Participants **16 years and older with an ID,**

▶ **BEER/CHAMPAGNE ALLOWED!**

Only participants with a green disco wristband can purchase alcoholic beverages at the drink stands

**Don't forget your tournament pass and, if necessary, your ID card!!!**



**Saturday, 28. June 2026 - 08:00 – 11:00 pm**



**Lohmühle, Tent**

### In addition:

- ❁ No alcoholic beverages or glass bottles are allowed to be brought onto the tournament grounds or to the party.
- ❁ It is not permitted to pass beer or other alcoholic beverages to other participants without a green party wristband.
- ❁ The team supervisors are responsible for ensuring compliance with these rules.
- ❁ The coaches/team supervisors are responsible for their players even during the disco.
- ❁ Team supervisors have access to the party grounds at any time upon presentation of the tournament pass.



## Coaches Lounge

It's a good tradition at the Handball Days for coaches and staff to network and exchange ideas. The platform of the world's second-largest youth handball tournament is excellently suited for maintaining existing acquaintanceships or forging new ones



We would therefore like to spend a relaxed and enjoyable evening over food and drink together with the team managers from the participating teams in every age group. Live music will also be provided for your entertainment. Come and see what we have in store!

**The Handball Days team warmly invites you to join us.**



**Saturday, 27. June 2026 – from 08:00 pm**



**In the Hansehalle**

You must have your coach ticket with you.



## Fun by the river

### Public swimming pool

The historic old town of Lübeck is situated on an island and is completely surrounded by the waters of the Wakenitz and the Trave. As a team, you can enjoy the beautiful Krähenteich and Falkenwiese outdoor swimming pool free of charge during your free time between matches.



#### Freibad Krähenteich

An der Mauer 51  
23552 Lübeck  
Täglich von 10:00-19:00 Uhr



#### Freibad Falkenwiese

Wakenitzufer 1b  
23564 Lübeck  
Täglich von 10:00-19:00 Uhr



### Canoe tour



And if you'd like to embark on a canoe tour afterward, circling around the historic old town of Lübeck, this is also available for your team at no cost.

#### **Kanu Club Lübeck e. V.**

Wallstrasse 38a  
23552 Lübeck  
Täglich von 10:00-18:00 Uhr  
[www.kclev.de](http://www.kclev.de)



Access will be granted with the Handball Days tournament pass.



## Handball Days Live

Download the app from the App Store onto your smartphone. The app provides you with handy information on the fixture list, team line-ups, live scores and lots more visitor information. You can also receive push notifications when your favourite teams have played their matches.

If you'd like to watch the match live on screen, you can launch the SolidSport live stream directly from ProCup. All pitches are equipped with a camera, so you won't miss a thing, even from the comfort of your own home.



Scan me



**By the way, we'll be posting the fixtures online about two weeks before the tournament starts.**

The ProCup app works on Android and iOS (iPhone) mobile devices. Go to the App Store or Google Play and search for ProCup.



## Prices for the live stream

Single match: €4.00

Early Bird All Access Pass: €15.00

All Access Pass: €18.00

Scan me



# SolidSport



## Sports equipment sales






Everything you need for your next game

Whether it's for a tournament, training or as a souvenir – you'll find a selection of handball equipment and fan merchandise in our sports shop.

Perfect for players, parents and fans.





## Our product range

-  **Handballs** – training and match balls in various sizes
-  **Jerseys & Shirts** – sporty and comfortable
-  **Indoor shoes** – optimal grip on the court
-  **Sports accessories** – socks, tape and more
-  **Merchandise** – Souvenirs from the Handball Days



## Location

-  Sales tent at the Lohmühle
-  Open during tournament periods

Drop by – we'd be happy to help

## We're here for you even outside of the Handball Days

Will you need any more kit later on, or would you like to buy something else? If so, pop into our sports shop at the Lübeck campus at Alexander-Flemming-Str. 1.

There you'll find a selection of handball kit and accessories all year round.



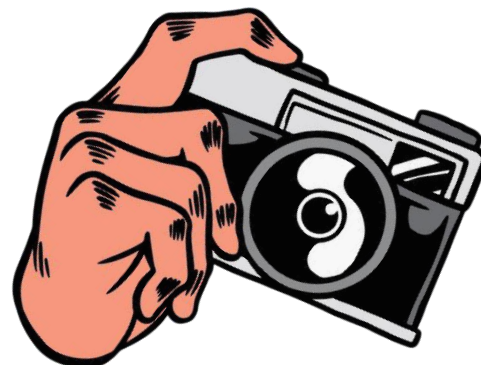
## Photos and Videos

During the Handball Days Lübeck, lots of photos are taken. Are you one of the enthusiastic photographers and would like to share your pictures with us?

If so, please contact us or send us your pictures via a sharing link to:



[fotos@handballdays.com](mailto:fotos@handballdays.com)



The photos will be reviewed by our team and then uploaded to our Flickr account. Additionally, the photos will also be available on our website.

If you have any questions or suggestions regarding photos and videos, feel free to contact us.

We look forward to receiving your pictures and videos!

## Your Organizing Team



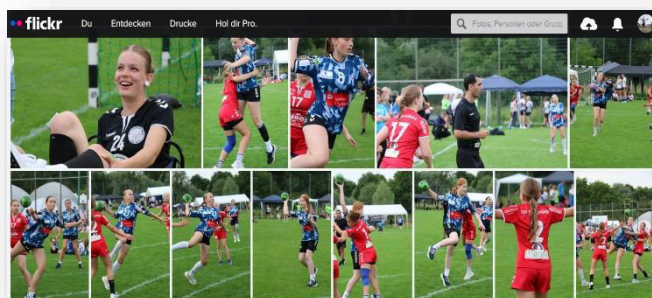


## Follow us on our social media channels!

Follow us on Instagram, Facebook, and Flickr before, during, and after the Handball Days to get all the updates and be active in our handball community. Don't miss the opportunity to share your passion for handball with like-minded individuals and experience a weekend full of action and fun!

See you on the playing field!

#handballdaysluebeck



**Here you'll find plenty of pictures and impressions from the #handballdaysluebeck**



## Award Ceremony

We want to honor your achievements with a small award ceremony.

As we have a large number of teams this year, we rely on your support to make it a success.



**The 1st to 4th places in the A-Cup and the 1st place in the B-Cup will be honored.**

The prize-giving ceremony will take place on the pitch immediately after the final match. We'll come out onto the pitch to join you after the final whistle and present the trophies. So please make sure you stay on the pitch and don't rush off straight away – there are some great prizes waiting for you.



**See you again soon.**

**Make a note of the date for the Lübeck  
Handball Days 2027 now.**

**2027**

**01.-04. July**

**HANDBALL DAYS  
LÜBECK**



# **Tournament regulations**

## Tournament rules

All games of Handball Days 2026 are played according to the current IHF regulations, unless there are additional provisions in the following paragraphs.

This means in particular:

- Allowing all kind of defense formations
- Substitutions can also take place when not in attack
- 2-minute suspensions, provide a reduction of players

### 1. Playing Time

In all categories the game-time in the group-stage is set to 2 x 11 minutes, which do not contain a half-time break. The teams change ends for the second half of the game. The time will not be stopped.

The timekeeping is done by the referees. Any game interruptions (Time-Out) should be avoided but the referees can decide if it's necessary. There will be no Team-Time-Out (TTO).

### 2. Throw-off

The first named team (home team) has the ball at the start of the game. The home team begins on the side where the field number (red) is shown.

There is no throw-off area. The throw-off must be taken from the centre line (with a tolerance of 1.5 m to either side of the centre line) in the middle of the court. The centre line may not be crossed until the throw-off has been taken.

### 3. Equipment

If both teams have a similar dress colour which cannot be differed – then the away team must change.

It is forbidden to enter all sports facilities with football shoes or shoes with metallic studs.

### 4. Playing field

The categories B/G 8 play with lowered bars (height 1,60 meters). A goalkeeper-throw is awarded when the ball has contact above the lowered bar. Also if the ball enters the goal after contact.

## 5. Gameball

The home team must provide a correct size and authorised ball to the game. The use of resin is forbidden in the age categories B/G 9, B/G 10, B/G 11 & B/G 12

The sizes of the gameball differ from every age group and must be used in the following age categories:

IHF-Size 0 46-48 cm bis 260 g	IHF-Size 1 50-52 cm 290-330 g	IHF-Size 2 54-56 cm 325-375 g	IHF-Size 3 58-60 cm 425-475 g
Girls 8	Girls 12	Girls 16	Boys 18
Girls 10	Girls 14	Girls 18	Men (Seniors)
Boys 8	Boys 12	Women (Seniors)	
Boys 10		Boys 14	
		Boys 16	

Furthermore, every team must provide a replacement ball which must be put next to every goal.

It is permitted to use **glue**. The use of glue is forbidden in the age categories 8, 10 and 12.

## 6. Suspensions (Disqualifications and extremely unsportsmanlike conduct)

Players and leaders that are disqualified (red card), or disqualified including a blue card (= red and blue card) will be suspended without any jury ruling for at least one match.

The referees will have to report every red / red & blue card according the rule 8:6 and 8:10 to the tournament board. The board will decide over further measures.

The team officials must independently contact the tournament jury to find out about the length of the suspension. If the suspension is not observed, all previous matches can be considered as a lost for the playing team.

## 7. Exclusion from the tournament

Participants may be excluded from further play at any time in justified cases. A justified case is for e.g., consumption of alcoholic beverages or under the influence of any drugs.

## 8. Eligibility to play

Only players who are registered in their ProCup club account and have a valid player's license for their club are eligible to play. In the senior groups a player license is not required.

### Age groups

Beyond this, only players in their age group are eligible to play. The following age categories apply:

Seniors	Boys/Girls 18	Boys/Girls 16	Boys/Girls 14	Boys/Girls 12	Boys/Girls 10	Boys/Girls 8
</= 2007	2008-2009	2010-2011	2012-2013	2014-2015	2016-2017	>/= 2018

Within the age group, each player is only eligible to play for the team in which he plays for in the first tournament match.

However, players may also play in a team of the next higher age group, only if the tournament board is informed before the game starts.

### Male and female teams

In general, there is a separation between female and male teams. However, there is no separation in the age group B/G8. In the B10 (!) teams, female players are also eligible to play in this age group. The tournament board may allow in individual cases that female players can also play in other male age groups. The permission must be given before the start of the first match.

On request, the player licenses of a team should be presented to the tournament board at any time for control purposes.

If the player is not eligible to play or there is doubt about an eligibility due to not presenting a players license the completed matches will be forfeited (0:2 points and 0:3 goals).

## 9. Injuries

If a player has been injured during the game and needs treatment, he or she has not got to leave the court for three attacks.

## 10. Scoreboard

Scoreboards are located at the edge of all playing fields. The home team shall appoint an authorised person to operate the folding panel. The scoreboard is not binding. Only the final result determined by the referees at the end of the match is relevant.

## 11. Livestreaming

On the playing fields there will be tablets placed from which the match will be streamed on our partner platform Solidsport. These can also be accessed afterwards on-demand. The home team appoints one person to operate the tablet and its functions.

All participants of the tournament hereby agree that they may be video recordings made of them during the matches. Otherwise a participation is not possible.

## 12. Referees

The referees of this tournament are appointed by the referee coordinator for every game. Every game is officiated by two equal or even single referees. Protests against referee assignments are not permitted.

## 13. Walk Over

If a team does not turn up for a match scheduled in the fixture list, the match will be forfeited with 0:2 points & 0:3 goals. If a game is cancelled due to a non-appearance of a team without fault, the game may be rescheduled. Any exceptions are reserved for the tournament board.

## 14. Protests

Protests must be handed in either written or verbal form from the team manager to the tournament board. This must happen until 30 minutes after the last game was played and also has a fee of 20,00 € which must be paid in cash at the tournament board. If the protest goes through, the fee will be awarded back or if not be kept.

Protests will only be considered regarding rule no. 8 (Eligibility to play).

## Registration & schedule information

At arrival the team representatives must report and register their team to the tournament registration desk immediately.

Furthermore, if the entry fee has not been paid in advance, we kindly ask you to pay at the registration desk. **If the entry fee has not been paid before the start of the tournament, the corresponding team will be removed from the schedule.**

If a club has more than one registered team in an age group and one of these teams have withdrawn before the start of the tournament, the board will decide which team this will be. As a rule, this will be the team with the highest index number (III before II, II before I), but this can be varied as long as the tournament schedule does not change radically. It is the responsibility of the clubs to independently check the match schedule for changes before the start of the tournament. The tournament schedule can be seen over our ProCup tournament page.

## Competition form

### Seniors - B/G8

In the ages groups seniors until B/G8, the teams play a simple qualification round in different groups.

The three best teams in a group of 5 teams, qualify for the A-Playoffs, the 4<sup>th</sup> and 5<sup>th</sup> placed teams play in the B-Playoffs.

This also refers to teams that are in a group of 6 teams, the first three Teams qualify for the A-Playoffs and the last three teams play in the B-Playoffs.

The A-/B-Playoffs are played in an elimination round until both finals and match for 3<sup>rd</sup> place (only A-Playoff) are determined.

## Match score

The following points are awarded:

- Win: 2 points
- Loss: 0 points
- Draw: 1 point

The results after the preliminary rounds and final rounds occurs under the following aspects:

- a) points
- b) head-to-head points
- c) head-to-head in goal difference
- d) head-to-head in goals scored

If a head-to-head comparison does not lead to a clear result, then the decision will be determined by a 7-metre throwoff (best of 5).

If the knockout games end in a draw, then a 7-metre throwoff (best of 5) will be played on a separate field.

*Version: 24<sup>th</sup>, March 2026*

**AGB's**

# Tournament terms and conditions for the year 2026



## General Participation

By registering for the tournament, you confirm that you have read and agree to the general participation conditions.

## Eligible Teams

Only teams affiliated with handball clubs are eligible to participate. School and recreational teams are not permitted.

## Age Categories

The specified age categories/years apply equally to male and female participants:

Seniors	</= 2007
A-Youth	2008 – 2009
B-Youth	2010 – 2011
C-Youth	2012 – 2013
D-Youth	2014 – 2015
E-Youth	2016 – 2017
F-Youth	>/= 2018

## Staging mode

The tournament begins with a preliminary round, followed by a main round. The main round features matches for the A and B Cups. The current tournament rules are published on the website [turnier.handballdays.com](http://turnier.handballdays.com).

## Start and End of Matches

The schedule will be available online at [www.handball-days.de](http://www.handball-days.de) before the tournament begins. Note that changes to the schedule may occur up until the tournament starts. Once the schedule is online, participants will be notified. For queries, contact Lars Tilse at [lars.tilse@handball-days.de](mailto:lars.tilse@handball-days.de).

## Match Times

**E-Youth and F-Youth (Mini-Mix):** Saturday and Sunday

**All other age groups:** Start on Friday

## Match Venues

Matches will take place on approximately 30 grass pitches in Lübeck. Local public transport can be used for the tournament weekend from Friday to Sunday.

## Participation Categories/Packages

### Gold Package (Friday to Sunday)

- Fee: €95 per person
- Accommodation in classrooms or sports halls. Classrooms cannot be locked individually. A key for the main entrance of the school or sports hall will be provided. The main entrance must be locked when leaving the accommodation. Participants must bring their own mattress or sleeping bag
- Meals: Dinner on arrival day through lunch on the last day (breakfast, lunch, dinner)

# Tournament terms and conditions for the year 2026



- Extras: Includes a tournament T-shirt. Shirt sizes must be submitted by April 30, 2026. If not provided, the required size cannot be guaranteed

## Gold Package Hostel (Friday to Sunday)

- Fee: €155 per person
- Meals: Dinner on arrival day through lunch on the last day (breakfast, lunch, dinner)
- Extras: Includes a tournament T-shirt. Shirt sizes must be submitted by April 30, 2026. If not provided, the required size cannot be guaranteed

## Silver Package (Friday to Sunday)

- Fee: €80 per person.
- Accommodation in classrooms or sports halls. Same conditions as Gold Package
- Meals: Dinner on arrival day through lunch on the last day breakfast.
- Extras: Includes a tournament T-shirt. Shirt sizes must be submitted by April 30, 2026.

## Silver Package Hostel (Friday to Sunday)

- Fee: €130 per person.
- Meals: Dinner on arrival day through lunch on the last day breakfast.
- Extras: Includes a tournament T-shirt. Shirt sizes must be submitted by April 30, 2026.

## Bronze Package (Friday to Sunday)

- Does not include accommodation or meals
- Fees:
  - €6.00 per person, or
  - €10.00 per person (including a T-shirt). Shirt sizes must be submitted by April 30, 2026

## Additional Details

- All packages include participation in the tournament program, entry to the multi-nation tournament at Hansehalle, and use of the shuttle buses (Friday to Sunday), subject to availability. Entry cannot be guaranteed. The organizer reserves the right to close venues if necessary.
- **Extra Overnight Stays:**
  - Gold Package: €38 per person (including breakfast, lunch, dinner).
  - Silver Package: €33 per person (including breakfast, dinner).

Teams that have booked the Gold or Silver package will receive the exact address upon registration at the tournament village or it will be displayed online. Based on experience, last-minute changes often occur before the tournament starts, so we cannot provide a 100% guarantee of the accommodation's location in advance.

## Changing Packages

- Changes to Gold and Silver Packages can be made until April 30, 2026, free of charge
- Changes to the Bronze Package are possible until April 30, 2026. Cancellations after this date will incur a 50% fee

For organizational reasons, online changes are only possible until May 17, 2026. After this date, any changes must be communicated via email to [anmeldung@handballdays.com](mailto:anmeldung@handballdays.com).

## Payment

Payments must be made in advance to the following account or in cash on Friday at registration:

- Account Holder: Int. Lübecker Handballtage – Förderverein MTV Lübeck e.V.
- IBAN: DE91 2135 2240 0134 9810 00
- BIC: NOLADE21HOL
- Bank: Sparkasse Holstein

## Meals and Catering

# Tournament terms and conditions for the year 2026



Catering is provided by a third-party caterer. Special dietary requests will be accommodated where possible. Send requests to [anmeldung@handballdays.com](mailto:anmeldung@handballdays.com).

Meal locations for Gold and Silver Packages:

- **Friday Dinner:** Tournament Village
- **Saturday & Sunday Breakfast/Dinner:** Tournament Village or school canteen
- **Saturday & Sunday Lunch:** Tournament Village

## Orientation and Handover

Orientation for schools or halls will be conducted by local contact persons. The timing for orientation and handover must be agreed with the contact person.

Since regular school operations will still be ongoing on Friday, classrooms can generally only be accessed after 16:00hrs. We kindly ask you to take this into account in your planning.

On Sunday, the handover must be completed by no later than 18:00hrs, except for clubs staying until Monday.

## Registration Deadlines

- **Registration Deadline:** April 30, 2026
- Late registrations are possible (waiting list). Requests should be sent to [info@handballdays.com](mailto:info@handballdays.com)

## Entry Fees and Deposits

- Entry fee: €111 per team (€50 for Mini-Mix teams).

Payments must be made by **April 3, 2026**, or immediately for late registrations.

Clubs participating in the Handball Days Lübeck with more than 4 teams will receive a corresponding discount after the tournament:

- **From 5 teams:** €88 per team
- From team 10 onwards, the registration fee is waived for all additional teams.

The reduced entry fee will be refunded in the form of a credit after the tournament.

Both the registration fee and the deposit must be transferred to our account before **April 30, 2026**. For teams registering after the deadline, the registration fee and deposit must be paid immediately. If a team cancels after the registration deadline, 100% of the registration fee will be charged. The deposit will be refunded approximately **4 weeks after the tournament**, provided the accommodation is handed over in proper condition.

## Participant List

All tournament participants (players, coaches, and staff) must be listed by name under their respective team in the club account at [www.handball-days.de](http://www.handball-days.de).

Each person must have a package booked (Gold, Silver, Bronze, or Bronze Plus). The number of individuals in the participant list must match the number of booked packages.

Entries in the participant list can be made until the deadlines specified for changes to the participation categories/packages.

## Registration at the Tournament Village

Registration takes place on Friday either at the Tournament Village or at your designated accommodation. During registration, you will receive the tournament passes as well as a tournament booklet for each team. Additionally, you will be provided with the address of your accommodation and the contact person responsible for instructions and inspections.

### **Note:**

On Friday, June 26, 2026, regular school activities will take place, meaning that accommodations will likely not be available for check-in until **16:00 hrs**.

# Tournament terms and conditions for the year 2026



Based on experience, longer waiting times can be expected on Friday between **14:00 and 18:00 hrs**, especially 1–2 hours before the parade/opening ceremony or the start of games. We are making every effort to keep these waiting times as short as possible through optimal planning.

We recommend sending an **advance team** to the tournament management to:

- Obtain all necessary information, such as accommodation details and updated game schedules
- Handle financial matters

## Insurance and Liability

All team(coaches) are responsible for ensuring that participants have adequate insurance coverage. The tournament does not provide general insurance for accidents, illness, theft, or property damage. Don't leave any valuable items in the classrooms.

The club is liable for damage or theft in the assigned classrooms/sports halls

## Cancellation of the Tournament and Force Majeure

If the tournament cannot take place or is postponed due to reasons beyond the control of the tournament management (force majeure\*) or events not caused intentionally or through gross negligence by the tournament management, the management is not liable for any damages, costs, or losses incurred by participants, including transportation costs, accommodation costs, additional orders, financial losses, etc.

In such cases, the tournament management reserves the right to either retain the entire registration and accommodation fees for a future tournament or to refund participants after deducting the costs already incurred for the organization of the tournament that cannot be recovered from third parties.

### **Note:**

The Handball Days – Förderverein MTV Lübeck e.V. accepts no liability for personal injuries or financial losses related to war, warlike events, civil war, revolution, unrest, official interventions, strikes, lockouts, blockades, or similar events.

## Opening Ceremony

Details will be announced closer to the event.

## Setting Up Tents and Pavilions

Setting up tents and pavilions on the grassy areas at the Lohmühle and Buniamshof venues is permitted. However, please note that ground anchors, pegs, or any other securing materials must not exceed a length of 30 cm. Longer materials may damage the drainage system.

## Data Protection

Registering a club, along with its teams and players, for the Handball Days involves the collection of personal data.

The data is collected via the website [www.procup.de](http://www.procup.de). This website is hosted by Efkon AB, owned by Ulf Andersson, Valborgsgatan 57, 21613 Limhamn, Sweden.

### **The following data is collected and stored:**

1. Club name and address
2. Contact person's name, address, email address, and phone number
3. Team age category and gender (male/female)
4. First and last names of players and coaches, year of birth, T-shirt size, and jersey number

### **Data Usage and Retention:**

## Tournament terms and conditions for the year 2026



- Data points **3** and **4** are used exclusively for the organization of the tournament and will be deleted after the tournament concludes.
- Data points **1** and **2** are stored permanently for future contact or inquiries.
- Additionally, data required for billing purposes will be stored and retained for the duration of the statutory retention period.

### **Consent:**

By registering, the club confirms that it has obtained consent for the entry of personal data from the contact persons, coaches, and players. The club agrees to the storage and use of the data as outlined above for the purpose of organizing the tournament.